



Sasa-ginni-gak LODGE
saslodge.com



Sasa-ginni-gak LODGE

CONTACT US

Toll-Free (North America wide) **1-888-536-5353**

Direct: **(204) 336-0798** | Fax: **(204) 339-2353**

Email: **info@saslodge.com** | Website: **www.saslodge.com**

Mail: 508 Airline Road St. Andrews, MB R1A 3P3 Canada



Contact Us

Toll-Free (North America wide) **1-888-536-5353**

Direct: **(204) 336-0798** | Fax: **(204) 339-2353**

Email: **info@saslodge.com** | Website: **www.saslodge.com**

Mail: 508 Airline Road St. Andrews, MB R1A 3P3 Canada



FLIGHTS

All flights depart from St. Andrews Airport, ten minutes north of Winnipeg on Highway #8. We will advise you ahead of time of your exact flight time. Please arrive one hour before the flight is scheduled to depart. Please pack wisely, excessive amounts of baggage requiring the use of an extra aircraft will be charged at charter rates and will not be guaranteed to be flown in on the same day as your arrival at camp.

Sas Lodge, Apisko & Charron flights begin departing at 5:00 a.m. Mondays – Fridays. This means that you **MUST** arrive at 4:00 a.m. in order to allow time to unload your gear, have it weighed and loaded on to the aircraft, and allow the pilot to do the paperwork accordingly. It is very important that the 5 a.m. flight leaves on time as the aircraft return to do daily scheduled flights to other destinations. When arriving, please check in at the office. Our staff is here at 4:00 a.m. to prepare for the 5:00 a.m. flight. Saturday flights will begin departing at 7:00 a.m. (check-in at 6:00 a.m.) and Sunday flights will begin departing at 8:00 a.m. (check in at 7:00 a.m.)

All flight times will be confirmed specific to your group.

DEPOSITS

We require a deposit of \$500 Canadian per confirmed guest. Deposits are expected within 30 days of making your reservation. For those reservations made prior to the end of the previous year, deposits are required by December 31st.

Deposits are mandatory. We will not hold dates without a deposit – no exceptions. There is always the possibility that you may have to cancel your trip for unforeseen and unexpected circumstances. Your deposit guarantees your dates. As head of your group it guarantees to you the commitment of the members of your group. Deposits are non-refundable.

PAYMENT OF TRIP

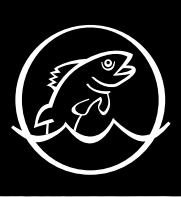
When your deposit is paid, we will invoice you for the balance of your trip. We request payment of the balance of your trip 90 days before your date of departure. If full payment is not received by this time, your reserved dates will be made available to other customers. Excess baggage charges will be collected at the time of departure or will be charged to the head of the group's credit card. Purchases of fishing licenses can also be added to your final invoice if previously requested.

FORMS OF PAYMENT

We accept Visa, Mastercard, Amex, as well as debit & cash.

TRIP CANCELLATIONS – This applies to individuals within your group or your entire group. If you have paid your trip in full any time before the 90 day deadline (early full payment) we will refund the amount paid minus the \$500 per person deposit and minus a \$50 per person cancellation fee. If you cancel your trip with less than 90 days before your departure date no refund will be given. Please consider purchasing trip cancellation insurance. Deposits may be applied to any future trip booked within one year from the date of your original reservation.





FANTASTIC FISHING

The largest lake in Atikaki Park, Sasaginnigak is a breathtaking place where you can fish reefs, drop-offs, shallow weedy bays and everything in between. Part of the Bloodvein River system, this pristine wilderness lake offers endless shoreline and underwater structure to spend your days fishing. With over 100 islands and 177 miles of shoreline you can fish 'til your heart's content, trolling, jigging and casting all the way! When it comes to your fishing trip on a remote lake, we want

your experience to be just the way you want it. We want you to choose the times you come and go, and to fish as much or as little as you please. Non-guided fishing is one of the reasons we describe Sas as the "the lodge that's not a lodge". But never worry that un-guided means unsupported. Our lakes are easily navigated. Any help or instruction you need is available before your trip, or when the pilot drops you off at the Outcamp or from our staff when staying at Sas Lodge.



Sasa-ginni-gak Lodge & Outcamps welcomed their first guests over 50 years ago. Today, like in the 1960's, Sas Lodge is a family owned business priding itself on providing a quality wilderness experience for every guest.

Sas Lodge is on Sasa-ginni-Gak Lake, situated in the heart of Atikaki Provincial Wilderness Park in Manitoba, Canada. The park ensures a protected wilderness area for generations to come. This beautiful area of boreal forest and granite rock is home to a strong healthy fishery which invites you to enjoy your greatest fishing trip ever! The 2014 season proved once again that

Sasaginnigak Lake is a sport fisher's dream with records for both the largest Walleye and largest Northern caught in the province for the 2014 season!!

Sas Lodge is a true wilderness lodge on an 8600 acre pristine lake with no other camps. Really it is a "lodge that's not a lodge" by the way we offer our guests full flexibility and freedom during their stay. Guests provide and cook their own meals and run their own boats - offering affordable fishing and no hassles of a schedule during your stay. All this, while staying in modern, comfortable cabins with staff that are always eager to lend a hand with anything you need.

Our outcamp lakes are located on three separate lakes in this same natural pristine setting. Nearby to Sas Lodge you will find Kesch Lake, an easily navigable lake, great for family trips. Further north you will find Apisko Lake and Charron Lake. Apisko is home to the Manitoba all time record Northern of 60", caught and released in 2004.

Charron is a large and deep lake with the added excitement of fishing for Lake Trout, as well as Walleye and Northern.

We hope you'll join us for fantastic fishing this season in the serenity of the Sasaginnigak wilderness.

To great friends, family and fishing,
The Johnsons

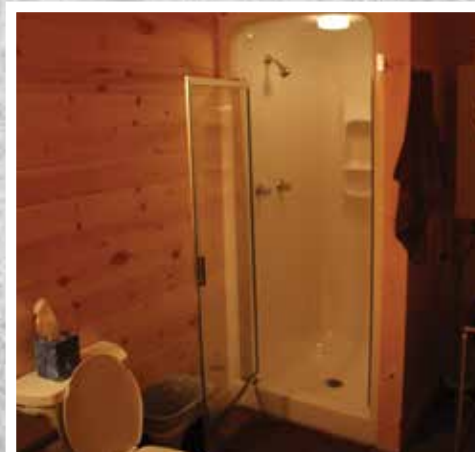


Executive Cabin



Super 6 EXECUTIVE CABINS

- Bedrooms: 2 | Sleeps: 10 | Bathrooms: 1
- Boats – 16 foot Alumacraft Yukon boats with swivel seats
- Motors – 30hp Yamaha 4 cycle electric start
- Two bedrooms with 5 twin beds each, 1 bathroom with shower, large living area with wood stove, lake front deck. Main area & each bedroom have a heat/cool wal unit.



Sasa-Ginni-Gak Lodge & Northway Aviation Ltd.

We know you have many options when it comes to choosing your destination for your fly-in fishing trip. There are many lodges who offer a great experience with outstanding fishing. However, there is one aspect of your trip that can easily be over looked. How are you being flown into camp? How much do you know about the company that is providing the air service? Many people have had some interesting experiences flying in the north over the years.

Northway Aviation is a family business that began both the lodge and air service in 1962. We love the old DeHavilland Beavers and Otters as much as you do, and most of our pilots started their careers on small Cessna aircraft. But today we operate modern, efficient Cessna Caravan aircraft that are safer, more reliable and provide a more comfortable and quieter flight.

Cessna Caravan - Northway operates Cessna Caravans on wheels and amphibious floats. The Amphib Caravans allow us to depart from the runway on wheels and land at the lodge or outcamp on floats. The Caravan's turbine engine will get you to your destination safely, quickly and with less cabin noise. You can have a conversation during the flight and may even enjoy the pleasure of air conditioning!

Northway Aviation Ltd. - Northway Aviation Ltd. is a year-round commercial air carrier with daily scheduled service for passengers and cargo into remote communities in north-eastern Manitoba and north-western Ontario. Northway has an excellent safety record and prides itself on providing dependable and reliable service. Northway's success has been built on developing and maintaining good relationships with the people of the communities which it serves. The company has operated for 52 years and is owner managed. Management is hands on, on a daily basis to ensure a high level of service for all customers.

Flight Operations - All aircraft are operated by instrument flight rules (IFR) so that they can be flown in almost all weather conditions. Northway aircraft have the most modern equipment with the ability to see weather, lightning strikes and traffic in the area. Pilots are trained at Flight Safety International which provides a high level of training and aircraft simulator experience. Northway operates out of the St. Andrews airport approximately 15 km north of the city of Winnipeg, Manitoba. Air traffic is managed by a control tower and the airport is equipped with approaches for IFR operations.

Northway has its own Approved Maintenance Organization (AMO) and all maintenance is performed on our premises. Northway also uses a state of the art maintenance tracking program and all aircraft engines are electronically trend monitored to provide data to flag any abnormalities to ensure the highest level of safety.

We know your main goal may be to have a great fishing experience, but our main goal is to get you to and from your destination not only when we say we will, but safely and professionally, so you enjoy every aspect of your experience from start to finish!



DEPOSITS ON BOATS

In 2017 all camps will have brand new boats and motors. Deposits will be required by credit card for each boat used by your group. One credit card will secure the deposits for all boats used by your group/your cabin.

The deposit will be \$500 per boat. All boats will be inspected upon your departure. Please notify the Camp Manager of any known or suspected damage before you depart camp. The \$500 deposit will be returned if there is no damage. An amount up to \$500 will be kept to cover any damages. Please see our boat waiver for further details.

CHANGE OF DATE FEE

One change/adjustment of booked dates is allowed. Additional changes will be assessed a \$50 per person fee.

HUNTER & ANGLER PRESERVATION FUND

There will be a \$5.00 per person fee charged on your invoice for the HAPF. Sas Lodge & Outcamps matches every dollar going toward this fund that we collect. For more information, please go to the Manitoba Lodges & Outfitters Association website at <http://www.mloa.com>.

SAS CABIN DESCRIPTIONS

STANDARD CABINS

Cabin 5 Sleeps 4

DELUXE CABINS

Master Angler Sleeps 9 Minimum group of 6 required.

Edgewater Sleeps 6 Minimum group of 4 required.

Hillcrest..... Sleeps 6 Minimum group of 4 required.

*Edgewater and Hillcrest will sleep 8, if 2 people share double beds.

EXECUTIVE CABINS

Super Six..... Sleeps 10 Minimum group of 6 required.

Tamarack Ridge..... Sleeps 8 Minimum group of 6 required.

Each cabin has two bedrooms, each with 4 or 5 twin beds (no doubles).

OUTCAMP CABINS

APISKO Sleeps 8 (twin beds, no bunks, 3 bedrooms)

CHARRON Sleeps 8 (twin beds, some bunks in 2 bedrooms)

*Reminder that bedding is NOT supplied at the outcamps.

SASA-GINNI-GAK LODGE & OUTCAMPS makes every responsible effort to serve our guests: we however assume no responsibility for liability for any hazard or peril of any kind associated with these trips. Neither is any obligation or responsibility assumed for any political, inclement weather, meteorological acts of God, acts of War, terrorist acts or any other even for the services of transportation companies, contractors or any other principals for which Sasaginnigak Lodge or Northway Aviation acts as agents.companies, contractors or any other principals for which Sasaginnigak Lodge or Northway Aviation acts as agents.

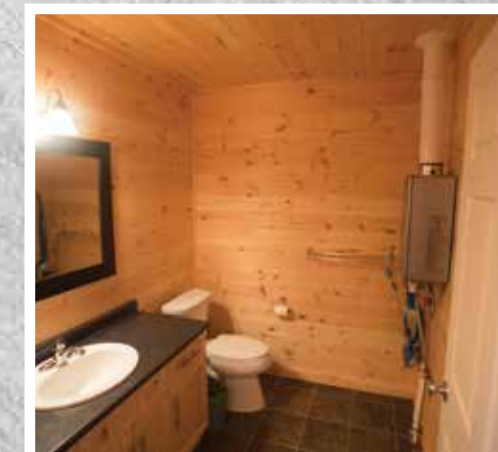
Executive Cabin



Tamarack Ridge EXECUTIVE CABINS

- Bedrooms: 2 | Sleeps: 8 | Bathrooms: 2
- Boats – 16 foot Alumacraft Yukon boats with swivel seats
- Motors – 30hp Yamaha 4 cycle electric start

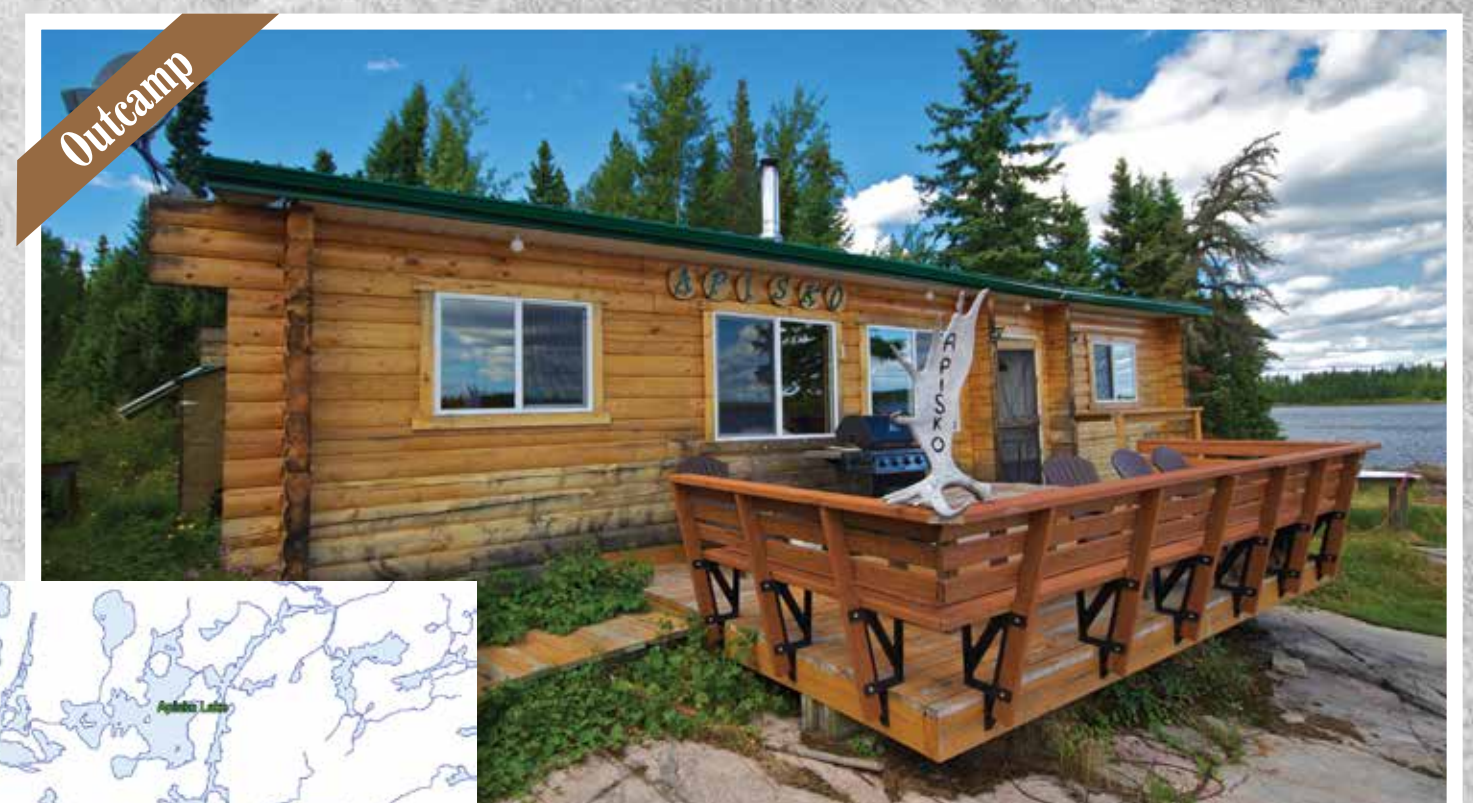
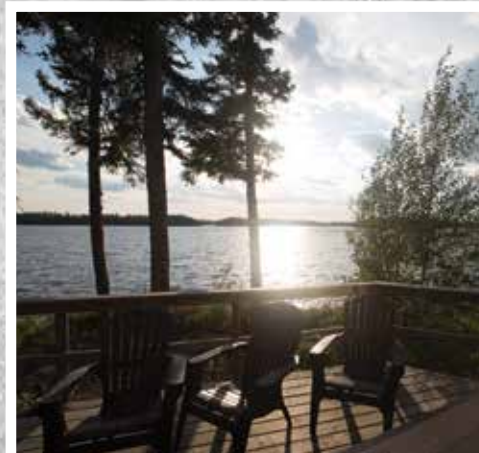
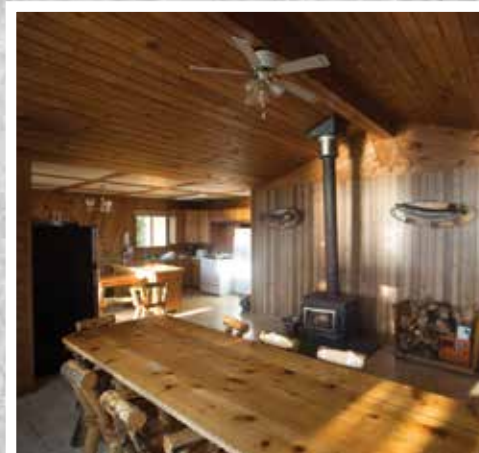
- Two bedrooms with 4 twin beds each, 2 bathrooms, 2 shower rooms, living area with wood stove, large lake front deck. Main area and each bedroom have a heat/cool wallunit.





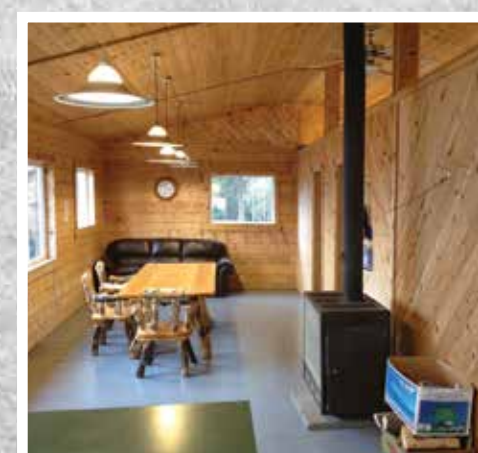
Master Angler DELUXE CABIN

- Bedrooms – 3
- Beds - 9
- Full Washroom
- Boats – 16 foot Alumacraft Yukon boats, wih swivel seats
- Motors – 30hp Yamaha 4 cycle electric start
- Large cabin with full kitchen, 2 fridges, microwave, lounge area featuring artisan wood furniture & wood stove. Lake front deck with unspoiled lake view.



Apisko Lake Outcamp

- Species – Northern, Walleye
- Co-ordinates – N52.29.75 W95.24.00
- Bedrooms – 3, Beds – 8, no bunks
- Boats – 16 foot Alumacraft Yukon boats with swivel seats
- Motors – 30hp Yamaha 4 cycle electric start
- 3 bedrooms, 1 washroom, with shower, wood stove, lakefront deck, propane barbecue and outdoor deep fryer.





Outcamp



Charron Lake Outcamp

- Species – Lake Trout, Northern, Walleye
- Co-ordinates – N52.41.96 W95.16.21
- Bedrooms – 2, Beds – 8, some bunks
- Boats – 16 foot Alumacraft Yukon boats with swivel seats
- Motors – 30hp Yamaha 4 cycle electric start
- Two bedrooms, 1 washroom with shower, wood stove, covered porch, dock with filleting shed.

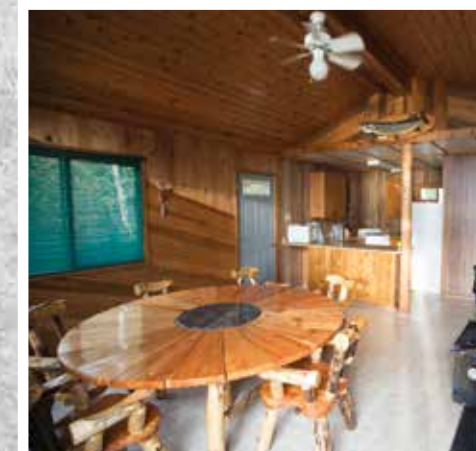


Deluxe Cabin



Hillcrest DELUXE CABIN

- Bedrooms – 2
- Beds – 6
- Boats – 16 foot Alumacraft Yukon boats with swivel seats
- Motors – 30hp Yamaha 4 cycle electric start
- Two bedrooms, 1 washroom with shower, wood stove, natural granite patio.



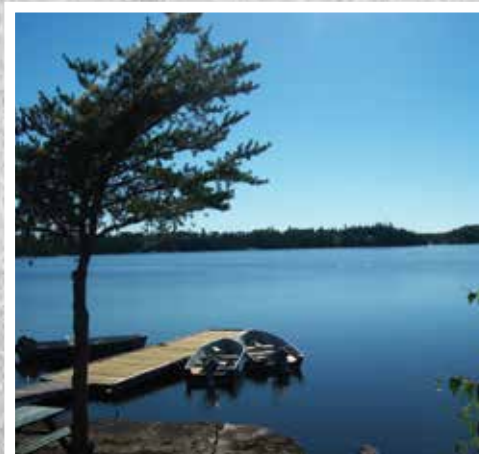
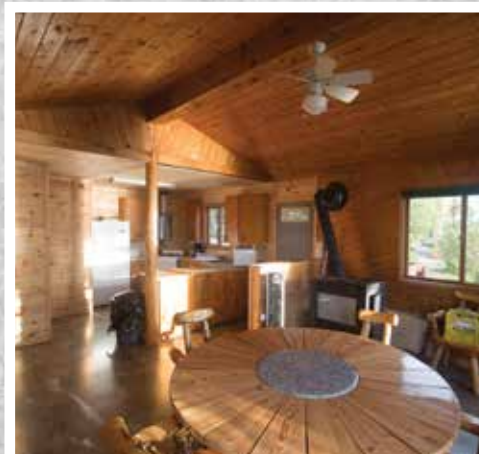


Deluxe Cabin



Edgewater DELUXE CABIN

- Bedrooms – 2
- Beds – 6
- Boats – 16 foot Alumacraft Yukon boats, with swivel seats
- Motors – 30hp Yamaha 4 cycle electric start
- Two bedrooms, 1 washroom with shower, wood stove, lakefront deck.



Standard Cabin



Cabin 5 STANDARD CABINS

- Bedrooms – 1
- Beds – 4
- Boats – 14 foot Lund boats with regular with swivel seats
- Motors – 15hp Yamaha outboards
- Two cabins (bedroom & kitchen), propane heat, deck, near shared dock, uses shared washroom/shower facility.

